

TECHNICAL FEATURES

Wavelength (nm)	LBO - 532 nm
Laser	Solid-State, frequency doubled, diode pumped
Power	5 Watt
Preselected programmes	Advanced software with experienced protocols to be manually customized by operator
Pulse duration (Ton - Toff)	Adjustable from 1 to 9000 msec - steps 1 ms
Number of pulses per sequence (single and pulsed mode)	From 1 to 100 - steps one
Interval between pulse sequence (pulsed mode)	Adjustable 10 ms ÷ 10 sec
Operation mode	Single pulse mode Pulsed mode Continuous mode
Numerical aperture	0,22
Cooling system	Air cooling system combined with Peltier's Cells
Aiming beam	Red - 635 nm - 5 mw (MAX)
Electrical power	125-220 VAC 50/60 Hz
Absorbed power	300 VA peak (adapted to domestic electric standard)
In compliance with	ISO 9001 ISO 13485 93/42/CEE CEI EN 60601-1 CEI EN 60601-2-22 CEI EN 60601-1-4 CEI EN 60825-1 CEI EN 60601-1-2
Weight and dimensions	13 kg - 35 x 34 x 13 cm



EUFOTON<sup>®</sup>  
M E D I C A L A S E R S

via Flavia 23/1 - 34148 Trieste (Italy)  
Ph. +39 040 9899082 - Fax +39 040 9890555  
www.eufoton.com - info@eufoton.com

ISO

9001

QUALITY ASSURANCE

ISO

13485

QUALITY ASSURANCE

Our facilities has been Registered to the International organization for Standardization ISO 9000 Series Standards for Quality.

Before and After photographs used in this brochure are courtesy of L. Bevilacqua MD, A. Crippa MD, E. Grech MD, O. Marangoni MD, F. Zini MD.



distributor space

penlab.it

EUFOTON<sup>®</sup>  
M E D I C A L A S E R S

# 500



LASE<sup>M</sup>AR 500<sup>TM</sup>

THE DELICATE LASER  
TO ERASE THE SKIN'S  
IMPERFECTIONS.

LASE<sup>Ma</sup>R 500<sup>TM</sup> the gold standard in the treatment of pigmented and vascular skin lesions, due to its extremely high absorption by oxy-hemoglobin and melanine.

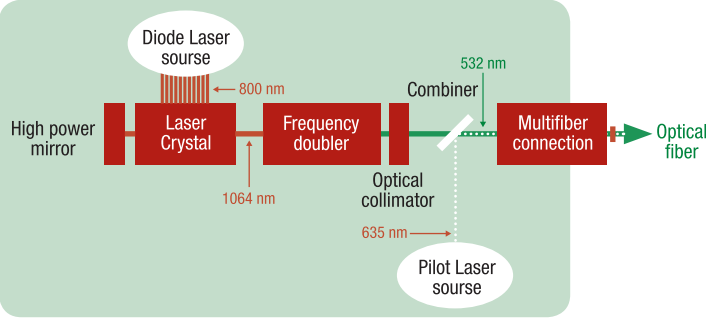
VASCULAR  
CUTANEOUS  
PIGMENTED LESIONS  
SCARS  
PHOTOREJUVENATION  
DENTISTRY



### FOR A SUPERFICIAL USE

**LASEmaR 500™** uses a high power semi-conductor (DPSS) with a frequency doubler that produces a wavelength of 532 nm (green light). It represents the gold standard in the treatment of superficial and vascular skin lesions, due to its extremely high absorption by oxy-hemoglobin.

**LASEmaR 500™** represents the newest solution in the field of diode lasers because it utilises a high power semiconductor at 808 nm to “pump” in an optical sense a crystal that produces light of a wavelength of 1064 nm. Such light is in the turn shone upon a duplicating crystal (LBO - triborate lithium) to “halve” the wavelength of 1064 nm and obtaining green light of 532 nm. Such a novel system of splitting the value of the wavelength allows the operator to control the exit of green light using very short pulses (down to 5 millisecs).



### CLINICAL ADVANTAGES

**LASEmaR 500™** doesn’t require any costly supplies nor dedicated air / water connections.  
**LASEmaR 500™** can be used for several hours per day without problems of over-heating, and without any consumption cost.  
**LASEmaR 500™** thanks to the programmable duration of the pulses on all the superficial and small diameter vessels and on pigmented lesions, can avoid the purpura and hypochromic effects.The dermal penetration of the 532 nm wavelength, is extremely superficial (1-2 mm), allowing bloodless treatment. Easy transportation and user friendly utilization.  
Maximum versatility thank to the wide range of accessories.

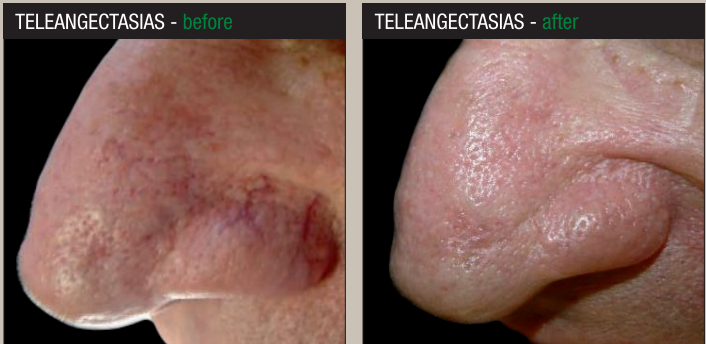
### INSTRUMENTAL ADVANTAGES

**INTUITIVE MEMORY** All treatment protocols are preloaded into the computer software.  
**SAFETY ACOUSTIC SIGNALS** This software allows for the control of execution flow or of energy target; alerting the operator on reaching this requirement via audio feedback and supplying information of dosages achieved without the necessity for the operator having to divert attention from the surgical field.  
**ENERGY METER/SENSOR** This system allows for the control of power output via the optic fibres.  
**PATIENT MANAGEMENT** This new software can be predisposed for the creation of a database for recording patients; their data and treatment effectuated in chronological sequence. The database is readily accessed to be updated, printed out or deleted.  
**SELF-DIAGNOSIS SYSTEM** The main circuits are continuously being monitored via a security system that warns the operator of any anomalies and automatically interrupts laser emission whenever it is deemed necessary.

### APPLICATIONS

#### VASCULAR LESIONS

Telangiectasias (face and limbs), Couperose, Matting, Neovascularization, PWS, Rosacea, Venous lake, Senile, Stellate and Cherry angiomas, Spider veins.



#### PIGMENTED LESIONS

Lentigines, Dermatitis Papulosis Nigra, Café au lait stains, Freckles, Hyper-keratotic lesions, Poikiloderma of Civette.



**LIGHTSCAN™**

- Cheangeable pixel dimension and density.
- Linear or random scanning mode.
- No overlapping.
- Pixel time variable with possibility of pulse repetition (sticking).

#### LIGHTSCAN™ - PHOTOREJUVENATION

The **LIGHTSCAN™** allows **LASEmaR 500™** to be used on selective treatments on wide surfaces and for fractional non ablative photorejuvenation for following photoaging indications: diffused telangiectasias and hyperpigmentations, skin’s thinning and superficial wrinkles and dilated skin pores. This is a non invasive treatment that deliver a green laser beam divided into thousands of microscopic treatment zones that target a fraction of the skin at a time. The result is visible from the first treatment and it improves in the next months, due to the collagen regeneration. Through the use of **LIGHTSCAN™** treatment is possible to: correct **wrinkles**, **reduce pigmented lesions**, **increase skin firming and tightening**, **reduce pores**.



#### CUTANEOUS LESIONS

Verrucas, Keratoses, Inflammatory acne.

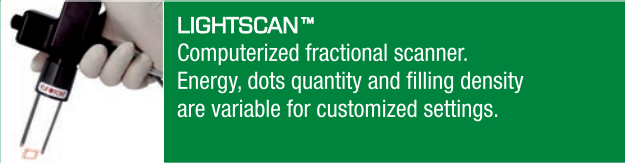


#### SCARS

Scars, Red stretchmarks.



### ACCESSORIES



**LIGHTSCAN™**  
Computerized fractional scanner. Energy, dots quantity and filling density are variable for customized settings.



**VARIABLE FOCUS HANDPIECE**  
For contactless applications. Spot size: from 0,2 to 2 mm.



**SURGICAL HANDPIECE**  
For contact applications 0,2 spot.



**HANDPIECE FOR DENTAL BLEACHING**



**OPTICAL FIBERS**  
Disposable and reusable fibres with calibre vary from 100 to 1000 micron.



**PROTECTIVE GLASSES**  
Permit a specific eye protection for the operator.



**STAINLESS STEEL GOGGLES**  
Adapt perfectly to the periorbital zone for eye protection.



**METALLIC TROLLEY CASE**  
A robust case with wheels for easy and safe transportation.



**COOLING BEAUTY MASK**  
For face cooling before and after treatments.



**POLARIZED LIGHT HELMET**  
To see approximately 1 mm under the skin surface.

#### OTHER ACCESSORIES

**EUFOTON CRIO COMPACT** Portable skin cooling device.  
**EUFOTON CRIO JET** For higher patient’s comfort during assisted laser treatments.  
**EUFOTON VACUUM** Smoke evacuator.

#### DENTISTRY

The main oral applications of **LASEmaR500™** are soft tissue surgery, endodontics, paradontology, hypersensitivity, and conservative therapy.